



5 Greystones Drive, Greystones, Sheffield, S11 7JQ

Saxton Mee

5 Greystones Drive

Greystones

Guide Price

£375,000

GUIDE PRICE £375,000 - £400,000

Situated in the sought-after area of Greystones, this well presented three-bedroom bay window semi-detached home offers spacious and versatile accommodation, ideal for families and professionals alike. Conveniently located within easy reach of local shops, independent cafe's and highly regarded schools, the property also benefits from off-street parking.

The ground floor comprises a welcoming lounge featuring a bay window and feature fireplace, creating a cosy yet comfortable living area. To the rear, the dining room enjoys sliding doors opening onto the patio, providing an ideal space for entertaining and indoor-outdoor living. The extended kitchen is bright and airy, offering pleasant views across the garden.

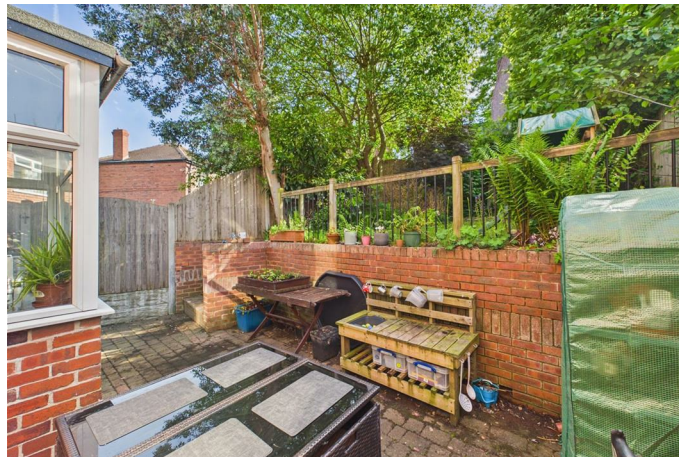
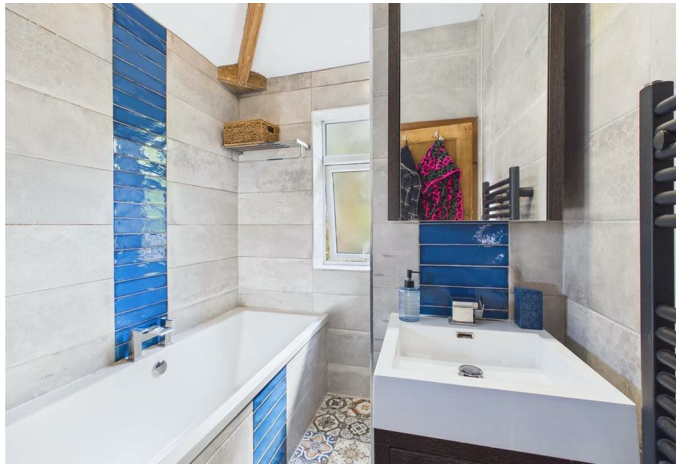
Upstairs, there are two well-proportioned double bedrooms, with the principal bedroom benefiting from additional storage and the second bedroom featuring fitted wardrobes. Bedroom three is currently used as a study, offering flexibility for home working or nursery space. A modern family bathroom completes the first floor accommodation.

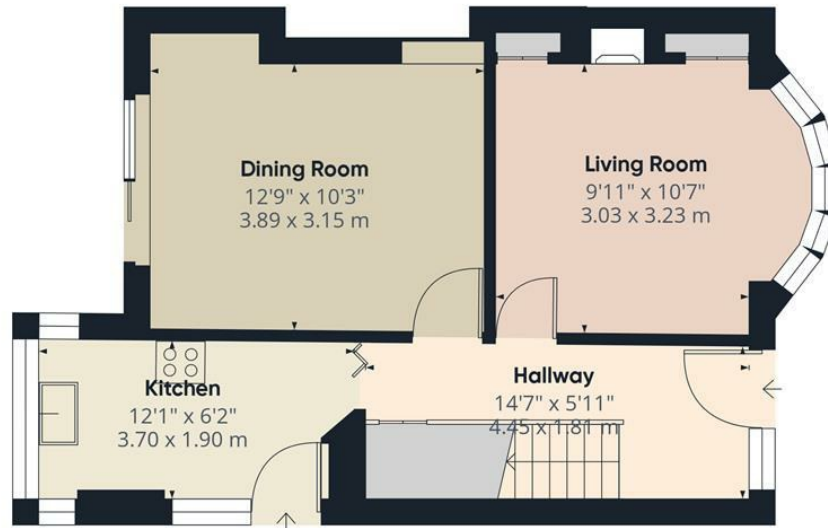
Externally, the property enjoys a patio seating area to the rear, perfect for relaxing or entertaining, alongside a lawned garden.



- Three-bedroom bay window semi-detached home in the sought-after area of Greystones
- Conveniently located close to local shops, cafes, and well regarded schools
- Off-street parking
- Cosy lounge with bay window and feature fireplace
- Dining room with sliding doors opening onto the rear patio
- Bright extended kitchen with views over the garden
- Two double bedrooms, including fitted wardrobes and additional storage, plus a versatile third bedroom/study
- Rear patio seating area and lawned garden ideal for outdoor entertaining and relaxation
- Council Tax Band C
- Viewings Via Saxton Mee Banner Cross

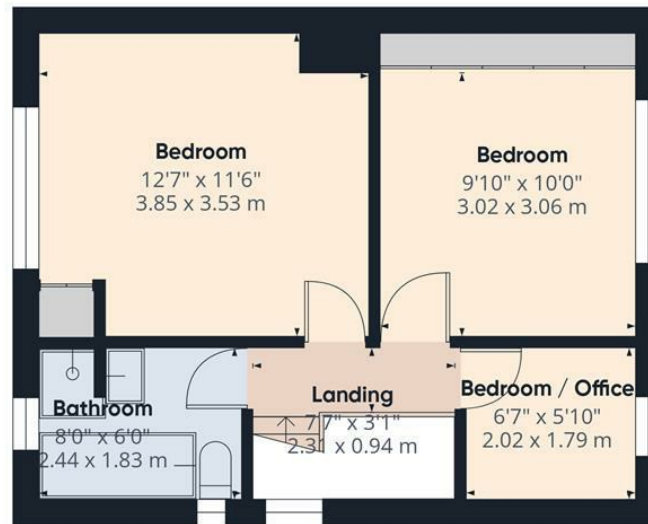






Ground Floor

Approximate total area^m
815 ft²
75.8 m²



Floor 1

(1) Excluding balconies and terraces

Calculations reference the RICS IPMS 3C standard. Measurements are approximate and not to scale. This floor plan is intended for illustration only.

GIRAFFE360



While we endeavour to make our sales particulars fair, accurate and reliable, they are only a general guide to the property and, accordingly, if there is any point, which is of particular importance to you, please contact the relevant office. The Agents have not tested any apparatus, equipment, fittings or services and so cannot verify they are in working order. The buyer is advised to obtain verification. Please note all the measurement details are approximate and should not be relied upon as exact. All plans, floor plans and maps are for guidance purposes only and are not to scale. Under no circumstances should they be relied upon as exact or for use in planning carpets and other such fixtures, fittings or furnishings. YOUR HOME IS AT RISK IF YOU DO NOT KEEP UP REPAYMENTS ON A MORTGAGE OR OTHER LOAN SECURED ON IT. 'A Life Assurance policy may be requested.' 'Written Quotations of credit terms available on request.'

Banner Cross
T: 0114 268 3241
E: bannercross@saxtonmee.co.uk
www.saxtonmee.co.uk

Hathersage
T: 01433 650009
E: hathersage@saxtonmee.co.uk

Bakewell
T: 01629 815307
E: bakewell@saxtonmee.co.uk

Matlock
T: 01629 828250
E: matlock@saxtonmee.co.uk

